

A decorative graphic on the right side of the page consisting of a grid of squares in various shades of blue. Some squares are solid, while others contain abstract patterns like stars or wavy lines. The grid is partially obscured by the text and the orange line.

# PEERPLAYS DEX: USE CASES

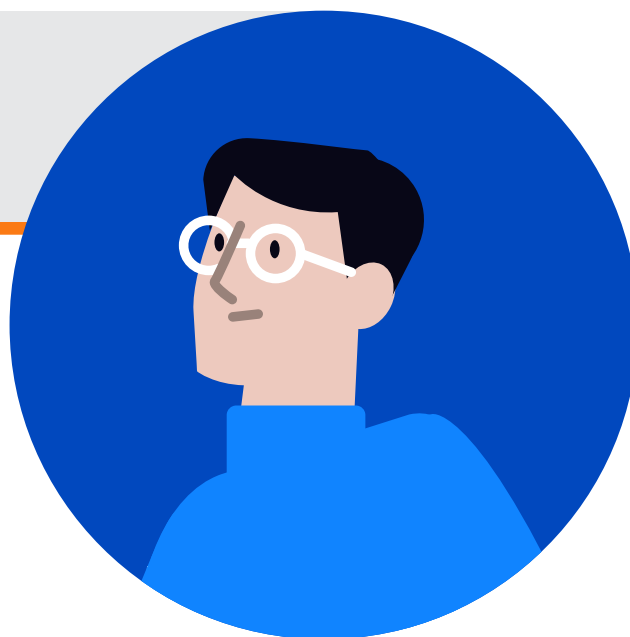
---

[peerplays.com](https://peerplays.com)

---

## Nathan: New to Crypto

Nathan is new to the world of cryptocurrency and is looking to take his first steps in trading. We believe the Peerplays DEX is the perfect introductory solution for him. With its intuitive design and user-friendly interface, anyone can easily understand and use the platform! We've also created a [comprehensive DEX User Guide](#) that walks you through all the features and functionalities, making it easy for you to get started.



## Rick: Values Privacy and Security

Thanks to the decentralized nature of the exchange, Rick can feel secure knowing that his trades are protected from hacking attempts and security breaches. Additionally, Rick can trade anonymously without having to disclose sensitive personal information or go through a verification process, ensuring that his privacy is protected! We outline our security settings in [Section 6](#) of the DEX User Guide.

## Elena: Craves Control

*Elena is a novice trader who wants to withdraw her funds from the DEX at any time.*

With the Peerplays DEX, Elena can withdraw her funds without the need for third-party involvement, ensuring that she has complete control over her funds at all times. This level of control and privacy is unmatched by traditional centralized exchanges, making the Peerplays DEX a top choice for users like Elena who value their privacy and control over her funds. [Section 3](#) of the DEX User Guide outlines the key functionalities of the DEX dashboard.



## Katy: Values Convenience

If you're like Katy and you are looking to easily deposit funds into your Peerplays DEX account, you can do so by transferring your funds to your web 3.0 Whalevault wallet. With Whalevault, you have complete control over your funds and can deposit and withdraw without third-party intermediaries. We outline the necessary Whalevault integration process in [Section 9](#) of the DEX User Guide.



## Tom: Seasoned Trader

Tom is an experienced trader who wants to trade using a decentralized exchange. He is always on the lookout for faster and more efficient ways to trade.

He has learned about the Peerplays DEX's sidechain capabilities (outlined in the [Advanced Settings](#) section of the User Guide), which allow for faster transactions, lower fees, and increased scalability.



*This is perfect for him because he requires high-speed transactions and the ability to trade on a secondary blockchain without having to leave the primary blockchain.*

## Janine: Early Adopter



Janine enjoys exploring new opportunities with innovative technology. She was intrigued when she learnt our [upcoming DEX release offers](#) the added advantage of sidechain capabilities. She was interested in becoming a Peerplays Node Operator (aka Witness). By [becoming a Witness](#), she earns rewards in the form of PPY tokens and contributes to the growth and stability of the Peerplays network.

## Decentralized Trading Just for You

Whether you're like Nathan, Katy, or Tom, our new DEX decentralized exchange offers a world of possibilities for your online trading goals. We believe that decentralized trading is the future of trading for the flexibility and freedom it offers. That's why we built this decentralized platform.

[Click here to find out how to Become A Witness](#)

[www.peerplays.com](http://www.peerplays.com)

[app.peerplays.zone](http://app.peerplays.zone)